



**Slate Run**

**Kindergarten Supply List**

**2016-2017**

You will need these supplies throughout the school year:

- \*Elmer's purple sticks (8 per student)
- \*Pink Erasers
- \*Yellow No. 2 pencils (pack of 10-12)
- \*Expo Dry Erase Markers (8 per student)
- \*Kleenex
- \*Clorox Wipes
- \*Hand Sanitizer
- \*Zip Lock bags – sandwich size (girls)
- \*Zip lock bags- gallon size with slide closure (boys)

All supplies will be collected for community use. Please **do not** put names on any supplies. We will label them as needed for school.

Thank you,

Slate Run Kindergarten Teachers



# Slate Run 1<sup>st</sup> Grade Supply List



We are requesting these materials be brought to school by the first day.

\_\_\_ Backpack (with name)

## Classroom Supplies

*(We use community supplies. DO NOT label with names unless noted.)*

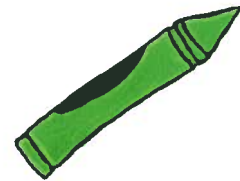
- \_\_\_ 1 Box of Crayons (24 count or larger)
- \_\_\_ 2 Flat Pink Erasers
- \_\_\_ 2 Glue Sticks
- \_\_\_ 3 Composition Notebooks
- \_\_\_ 2 Dry Erase Markers
- \_\_\_ 1 Box of Kleenex
- \_\_\_ 4 Portfolio Folders with 3 Ring Prongs in the Middle- any color.
- \_\_\_ Sturdy Clipboard (Label with Name)
- \_\_\_ Headphones (send in Ziploc bag and Label with name)

Optional: Bottle of Hand Sanitizer

\*Your child will need a daily nutritional snack.

# Slate Run 2nd Grade Supply List 2016-2017

- Thirty yellow pencils with erasers
- Four large pink, rectangular erasers
- One box of 25 count crayons (no larger)
- Two composition books (Mead Composition Book Style)
- Pencil pouch for supplies (No larger than 8x10, canvas wears best. This is in place of traditional pencils boxes. The students will not need a pencil box.)
- 4 pocket folders with three prongs and pockets, one of each color (red, yellow, blue and green)
- Water bottle
- 2 regular size boxes of tissues
- Washable Markers- 1 pack
- Dry erase markers (4)- broad tip, Black color only
- Boys - quart size **freezer** bags
- Girls - gallon size **freezer** bags



Many supplies are used in a community style.

\*Examples of Acceptable Snacks for FRUIT Break:

Fruit-dried, canned, or fresh (bring spoon if needed)

Vegetables

Popcorn

Pretzels

Crackers

Granola bars (no chocolate)

Cheese or cheese and crackers

Slim Jims

Yogurt

Water is the *only* drink allowed during class.



## Slate Run Elementary

### Third Grade Supply List 2016-2017

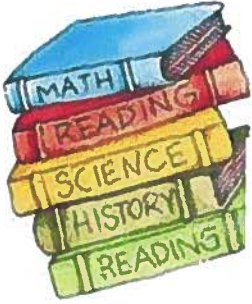
- 2 boxes of sharpened pencils (12-24 per box)
- 2 plain wide-ruled one subject spiral notebooks
- 1 pack of erasers
- Expo brand dry-erase markers
- Sandwich sized baggies
- 2 large boxes of tissues

All supplies will be collected as community supplies. Please do not put names on any supplies. We will label them as needed for school.



2016-2017

Slate Run 4<sup>th</sup> Grade- School Supply List



- School box (regular size)
- 1 box of 24 yellow #2 pencils (3-6 pencils sharpened)
- 1 box of markers
- 1 package of colored pencils (bring sharpened)
- 2-3 glue sticks
- Scissors
- 2 red ink pens
- 1 box of Kleenex
- 1 pack of wide-ruled notebook paper
- 4-8 EXPO dry erase markers
- 1 large bottle of hand sanitizer for classroom use
- 1 package of index cards (lined or unlined)
- 8 folders with 3 prongs and 2 pockets (2 each of red, blue, yellow, and green)
- 5 1-subject spiral notebooks (1 red, 1 yellow, 1 green, 1 blue, 1 color of choice)
- Packages of post-its (3 inch and 1 inch sizes)
- Slate Run Assignment Book- available at registration or in front office
- 1 box of Zip-lock baggies (sandwich sized)

**\*\*\*All supplies will be collected for COMMUNITY USE. Please do not put names on any of the supplies. WE will label as needed for school**

Thank you,  
4<sup>th</sup> Grade Teachers